
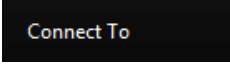
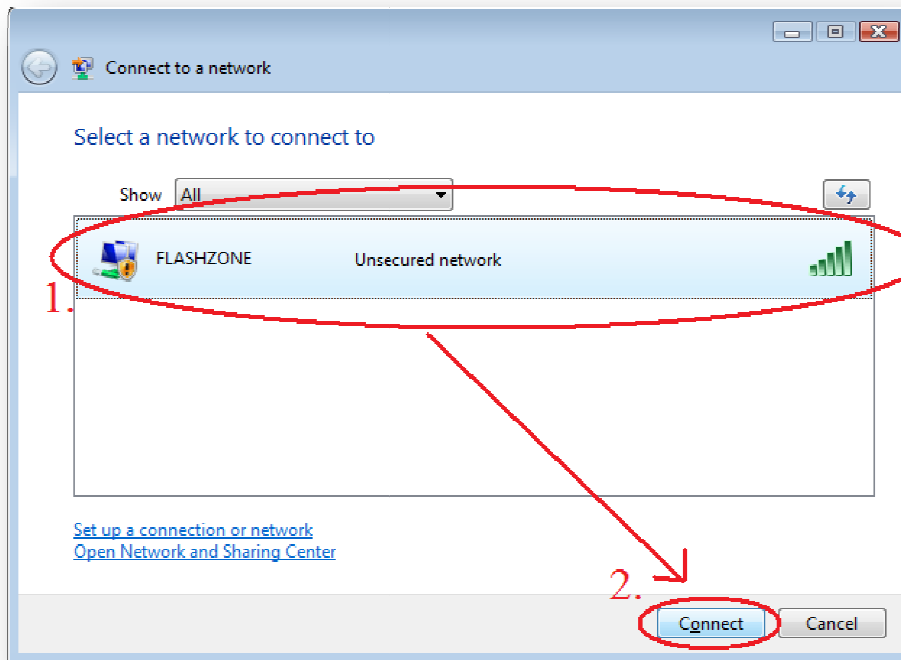


Setting up and Connecting to FlashZone VPN in Windows Vista

There are two connections necessary to connect to the Wireless Network at Kent State University. The first is the **Flashzone Wireless Network** and the second is the **Flashzone VPN**. This tutorial will guide you through setting up and connecting to these two connections. If you have already setup the **Flashzone Wireless Network**, skip to the second section titled "Setting up the **Flashzone VPN**."

I. Setting up the **Flashzone Wireless Network**

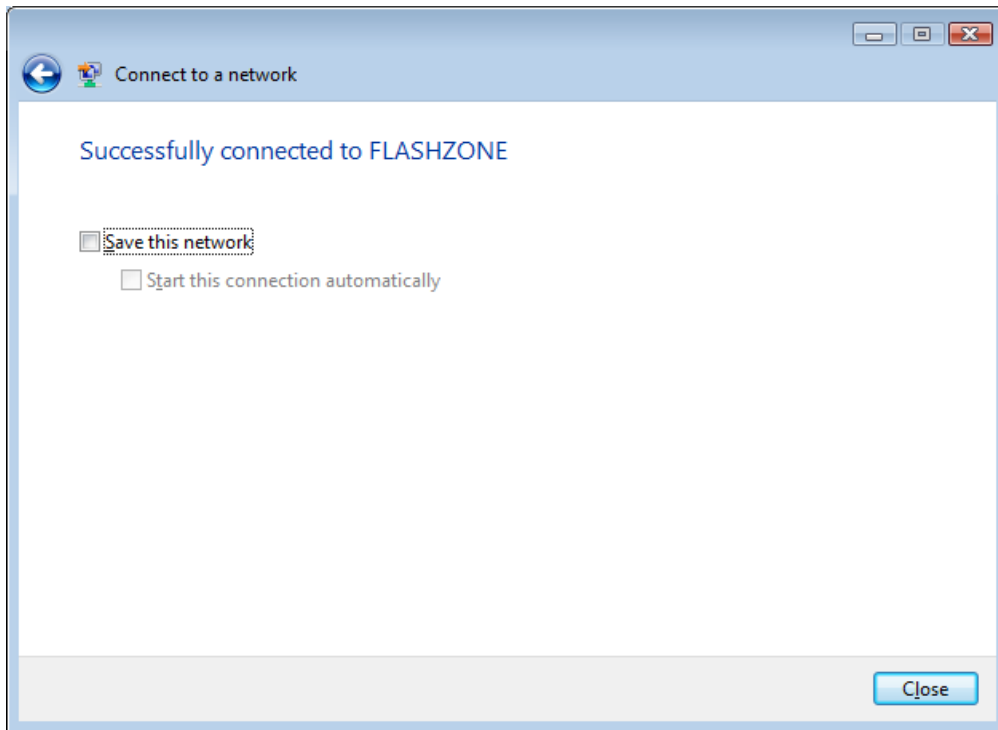
1. Click the Start button  and select Connect To 
2. The following window appears:



Click on the FLASHZONE, then click connect.


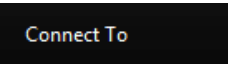
3. The next screen will prompt you about connecting to an unsecured network. Click Connect Anyway. The next part that we will setup will address the issue of securing your connection.

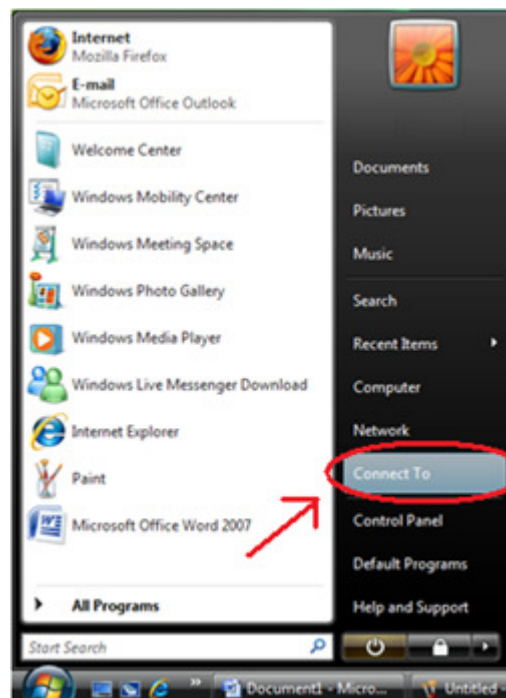
4. Once it connects you will get a screen that will look like the following:



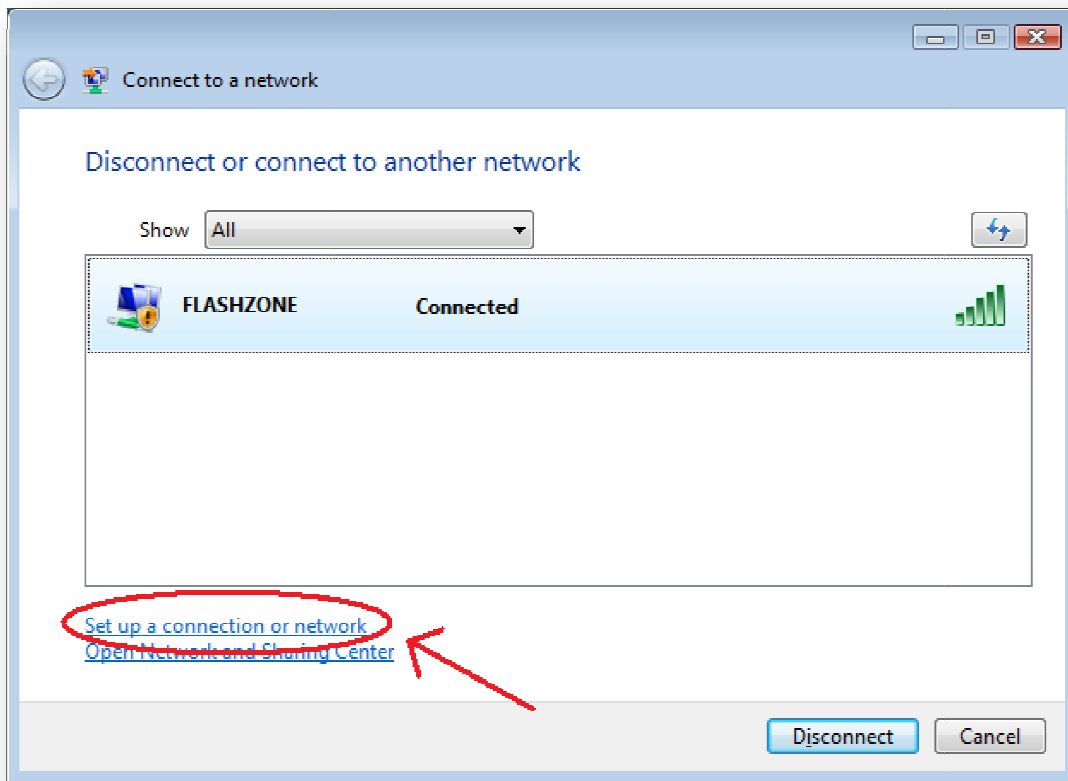
Click Save this network then click close. You have successfully connected to the **Flashzone Wireless Network**.

II. Setting up **Flashzone VPN**

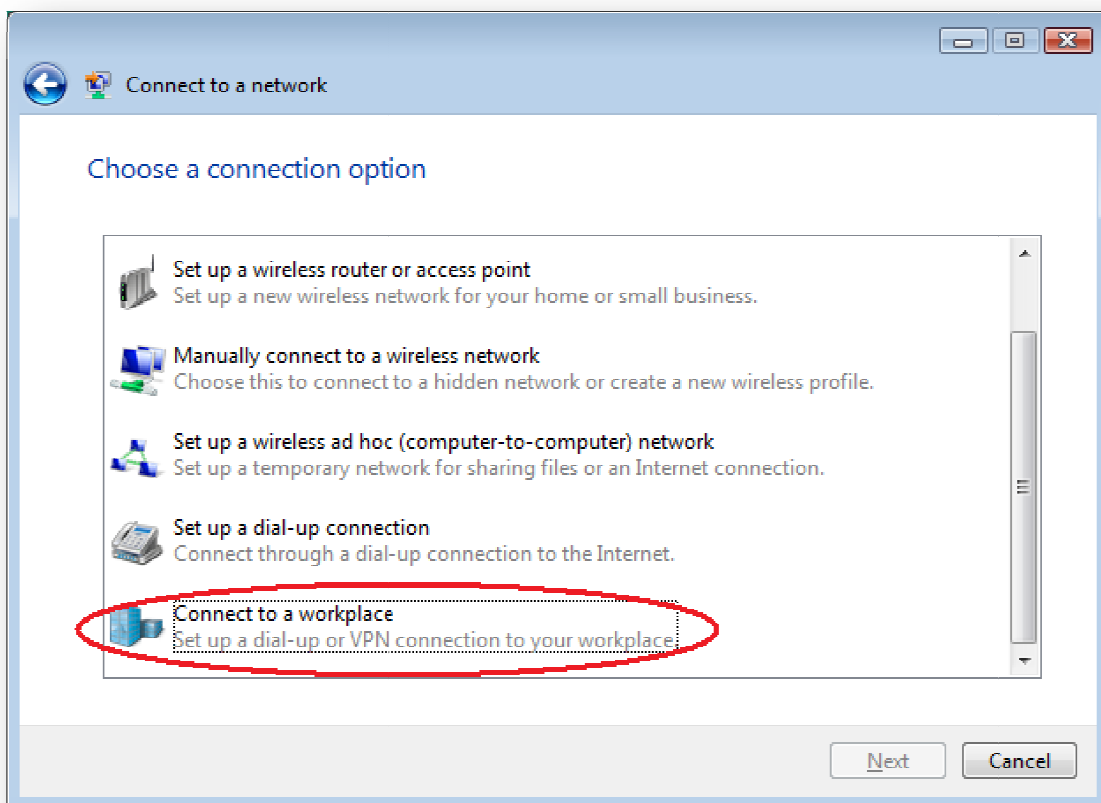
5. Click the Start button  and select Connect To 



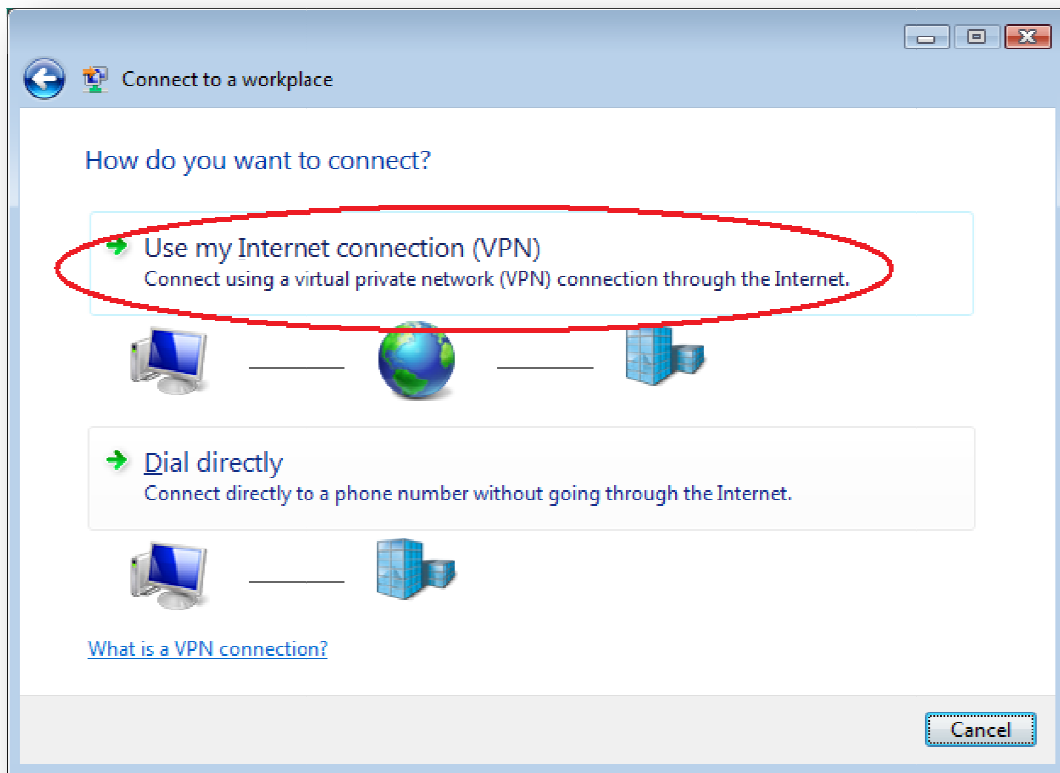
6. The following box appears, click “Set up a connection or network”.



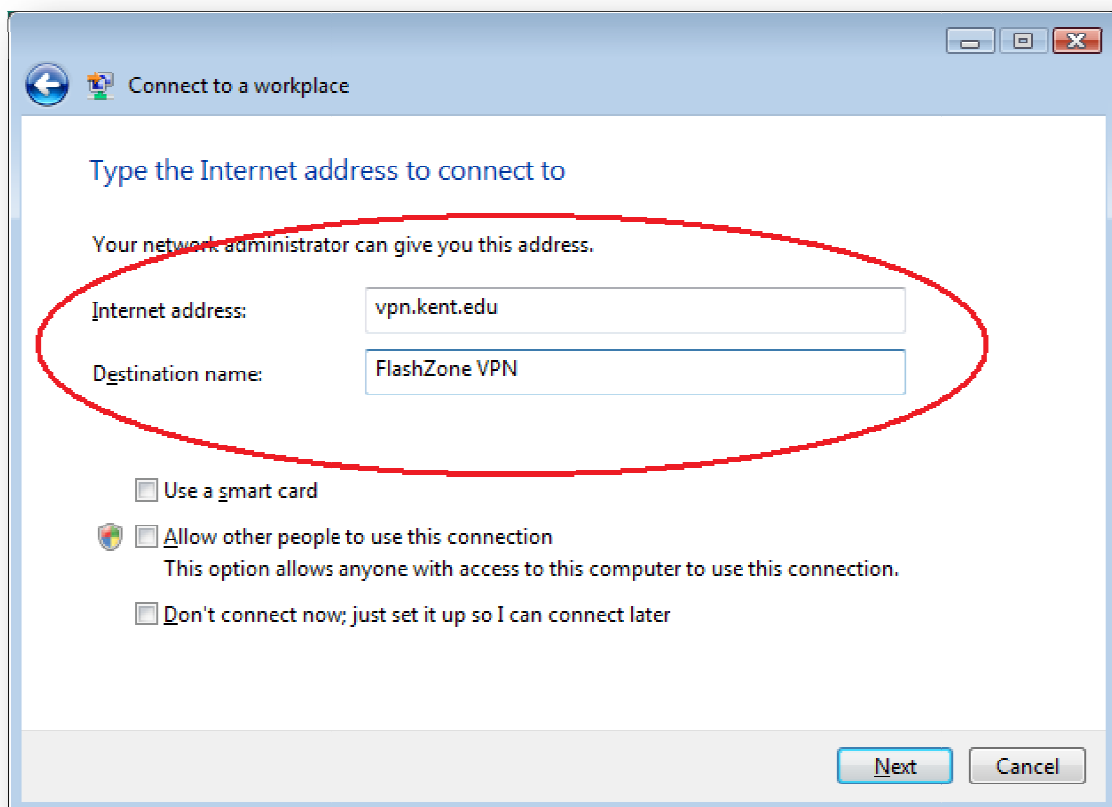
7. The next window appears, scroll down and select “Connect to a workplace” and click next.



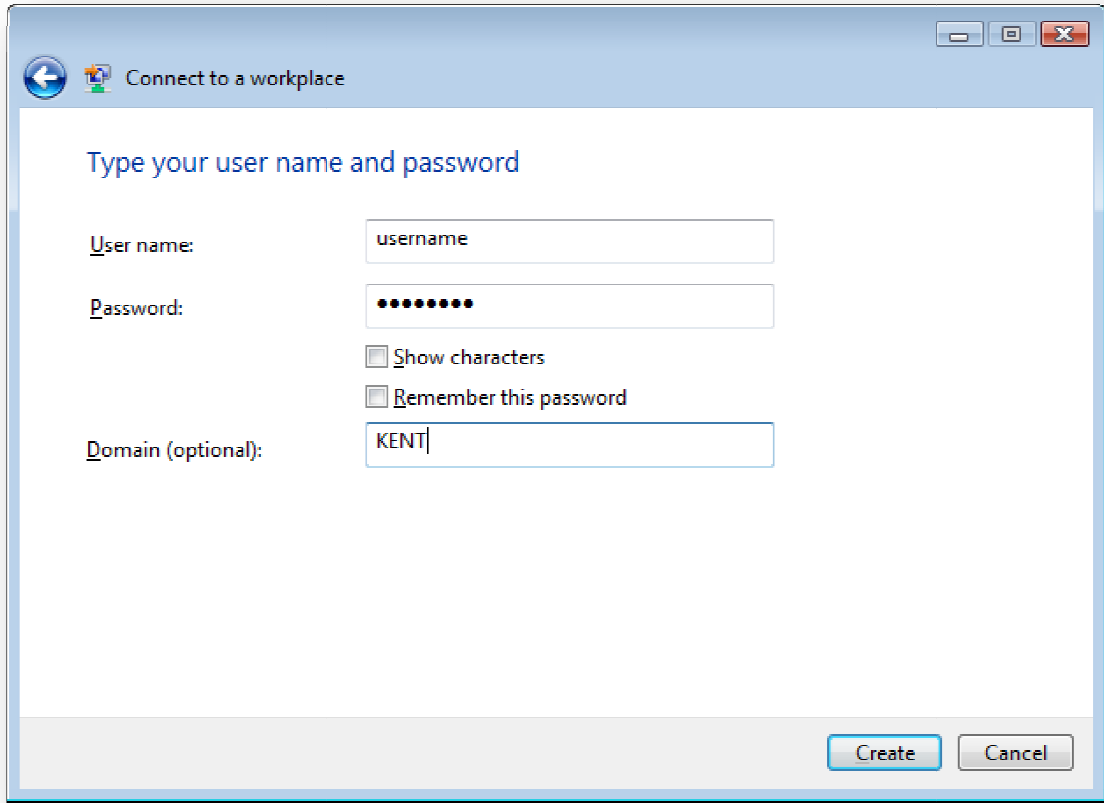
8. The following window appears where you select "Use my Internet connection (VPN)"



9. The window will require you to input some information. The internet address is "vpn.kent.edu" and the Destination name is FlashZone VPN. Leave all checkboxes below unchecked and click next.


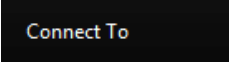


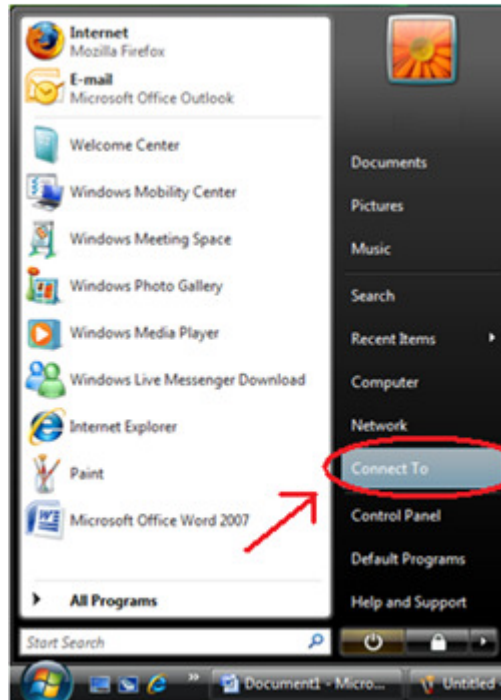
10. Now is where you want to put in your Flashline username and password, along with “KENT” as the domain.



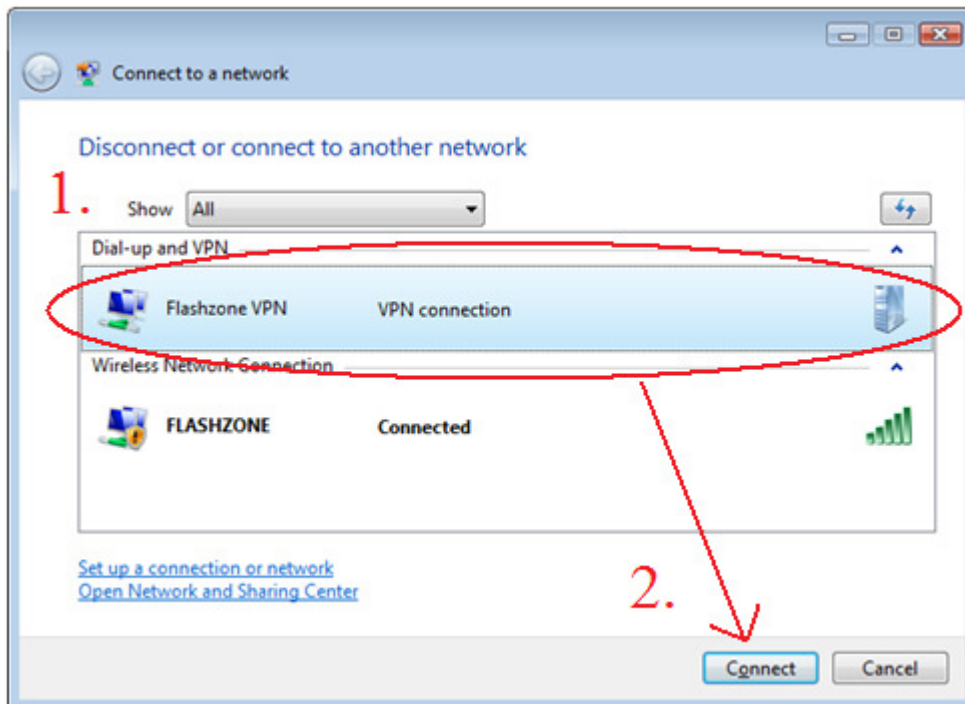
11. To create a shortcut on the desktop for the Flashzone VPN connection, go to Control Panel and go to “Network and Sharing Center”. On the left task bar click “Manage network connections”. In the window that appears, right click on “Flashzone VPN” and select “Create Shortcut”. When prompted click yes to place it on the desktop.

III. How to Connect to **Flashzone VPN**

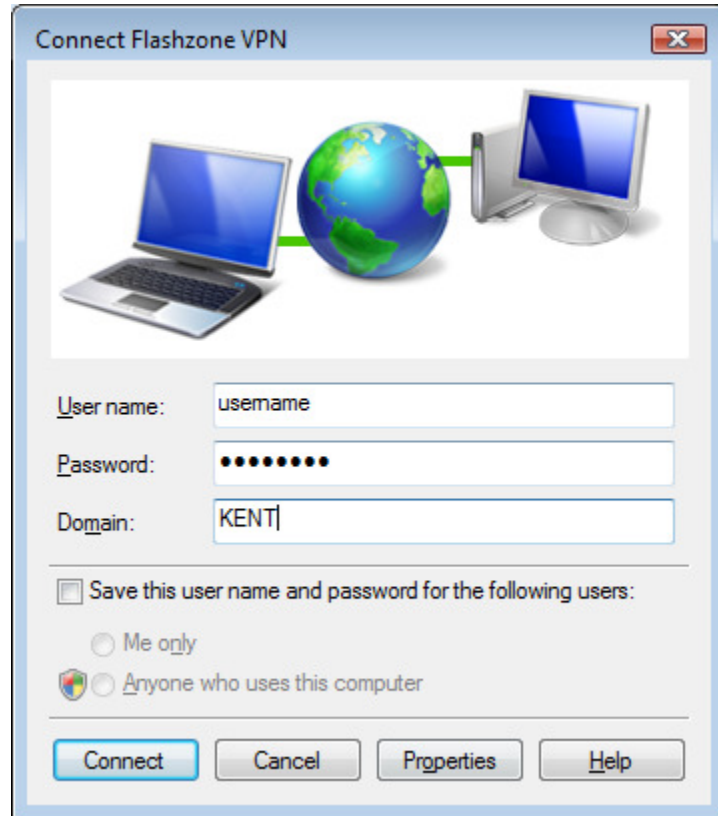
1. Click the Start button  and select Connect To 



2. Click Flashzone VPN under the heading Dial-up and VPN. Then Click Connect at the bottom right part of the window.



3. The following window appears where your Flashline user name and password are used. In the Domain field type KENT, then click Connect.



If you cannot connect...

The following are common symptoms to why you may not be able to connect to the Flashzone VPN:

1. You do not have a connection to the Flashzone wireless network. To resolve this make sure your computer's wireless card is on and is selected to connect to the Flashzone network. Once your network card is on, you can confirm that you have a valid connection by checking your IP address by doing the following:
 - a. (If successfully connected to the wireless network you should get an IP address that starts with 131.123 as show below)



This can be confirmed by pressing on the keyboard 'windows key' plus the letter 'R' and typing "cmd" then the enter key. Once the Command Prompt window appears type "ipconfig" then enter. A correct IP address would look like the following in the command prompt window (the highlighted numbers):

```
Wireless LAN adapter Wireless Network Connection:  
Connection-specific DNS Suffix . : gate.kent.edu  
Link-local IPv6 Address . . . . . : fe80::b165:424e:7e4e:92cd%10  
IPv4 Address. . . . . : 131.123.180.247  
Subnet Mask . . . . . : 255.255.252.0  
Default Gateway . . . . . : 131.123.183.254
```

2. You get an Error code when trying to connect to the Flashzone VPN. To resolve this problem make sure you have the official KSU McAfee which is available at <http://helpdesk.kent.edu>. Before installing make sure to uninstall your current anti-virus software. If you do not want McAfee then you can simply disable your anti-virus. Also be sure that you aren't using any third-party firewalls such as Norton's security suite or Zone-Alarm. You can simply disable these before connecting to Flashzone. Note: By disabling your security protection you are opening up vulnerabilities that can harm the contents of your hard drive. The recommended configuration to use the Flashzone wireless network is to have the KSU McAfee Anti-Virus and to use Windows Firewall.

3. It keeps asking for you for your user name and password. To resolve this make sure you can login to Flashline. If you can login there your password needs to be reset. Simply call the Helpdesk at 330-672-HELP(4357).