

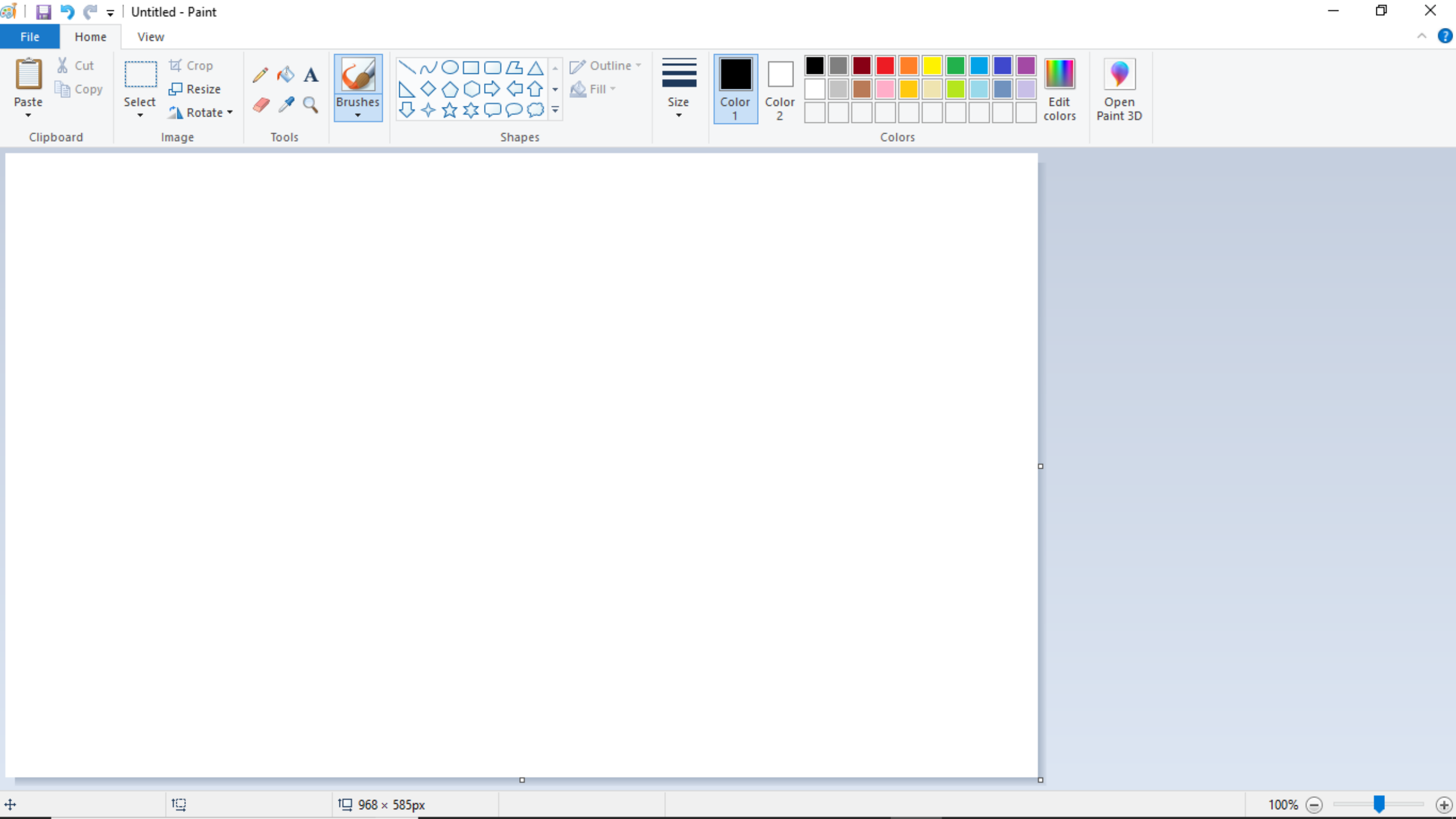
Microsoft Paint Tutorial



Windows Start menu search results for "Paint". The search bar at the top contains the text "paint". The results are categorized into "Best match", "Apps", "Search suggestions", and "Store (1)".

- Best match:** Paint (Desktop app) - This result is circled in green.
- Apps:** Paint 3D
- Search suggestions:** paint - See web results
- Store (1):** (No results listed)





Paste



Cut



Copy

Clipboard



Select



Crop



Resize



Rotate

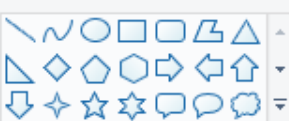
Image



Tools



Brushes



Shapes



Outline



Fill



Size



Color 1



Color 2



Colors



Edit colors



Open Paint 3D



File

- New
- Open
- Save
- Save as
- Print
- Share
- Background
- Protect
- About Paint
- Exit

Save as

- PNG picture**
Save a photo or drawing with high quality and use it on your computer or on the web.
- JPEG picture**
Save a photo with good quality and use it on your computer, in email, or on the web.
- BMP picture**
Save any kind of picture with high quality and use it on your computer.
- GIF picture**
Save a simple drawing with lower quality and use it in email or on the web.
- Other formats**
Open the Save As dialog box to select from all possible file types.

Save your work !



Outline

Fill

Size

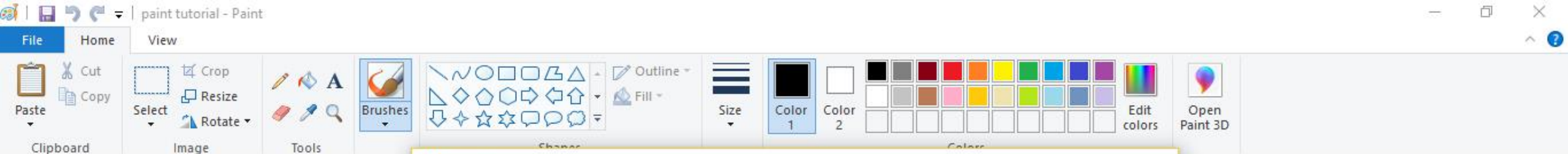
Color 1

Color 2

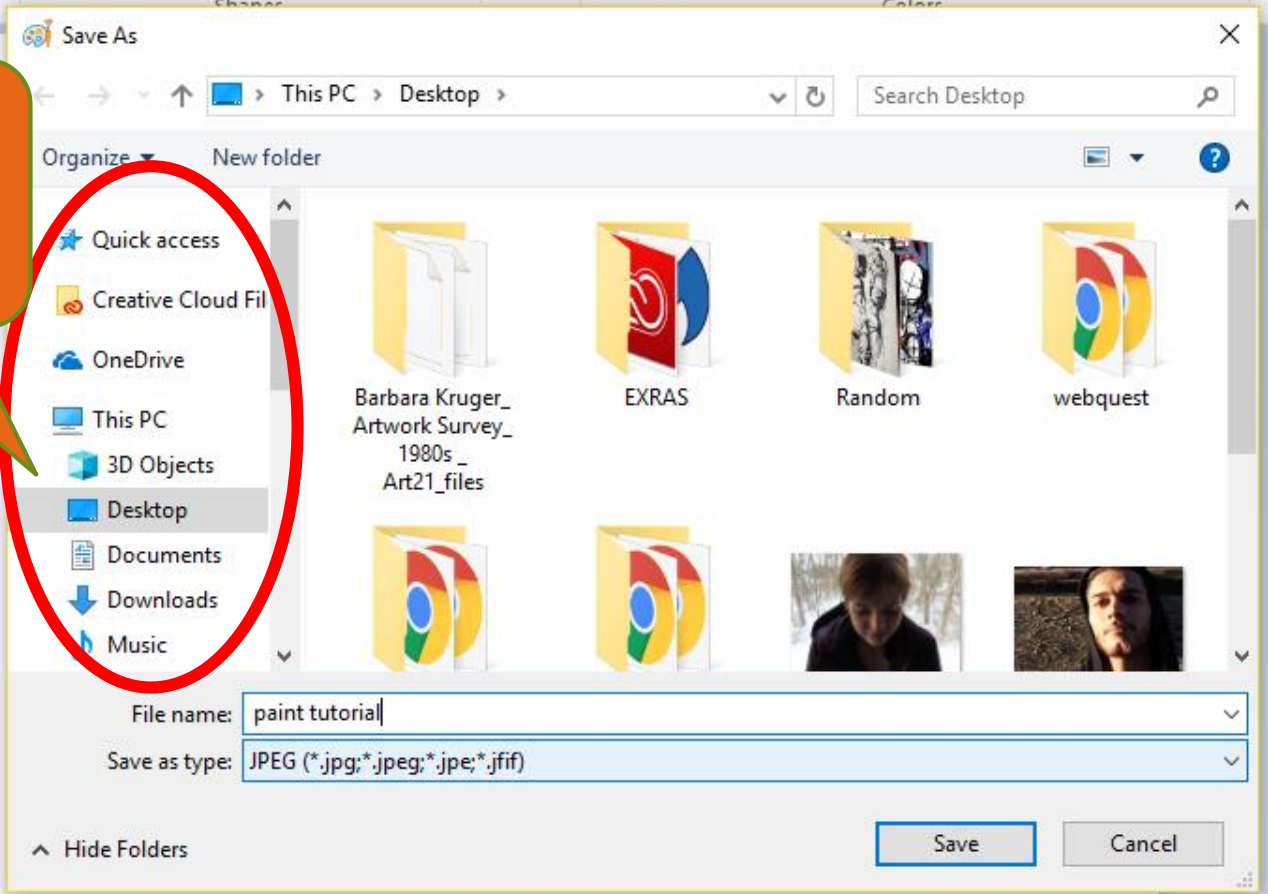
Colors

Edit colors

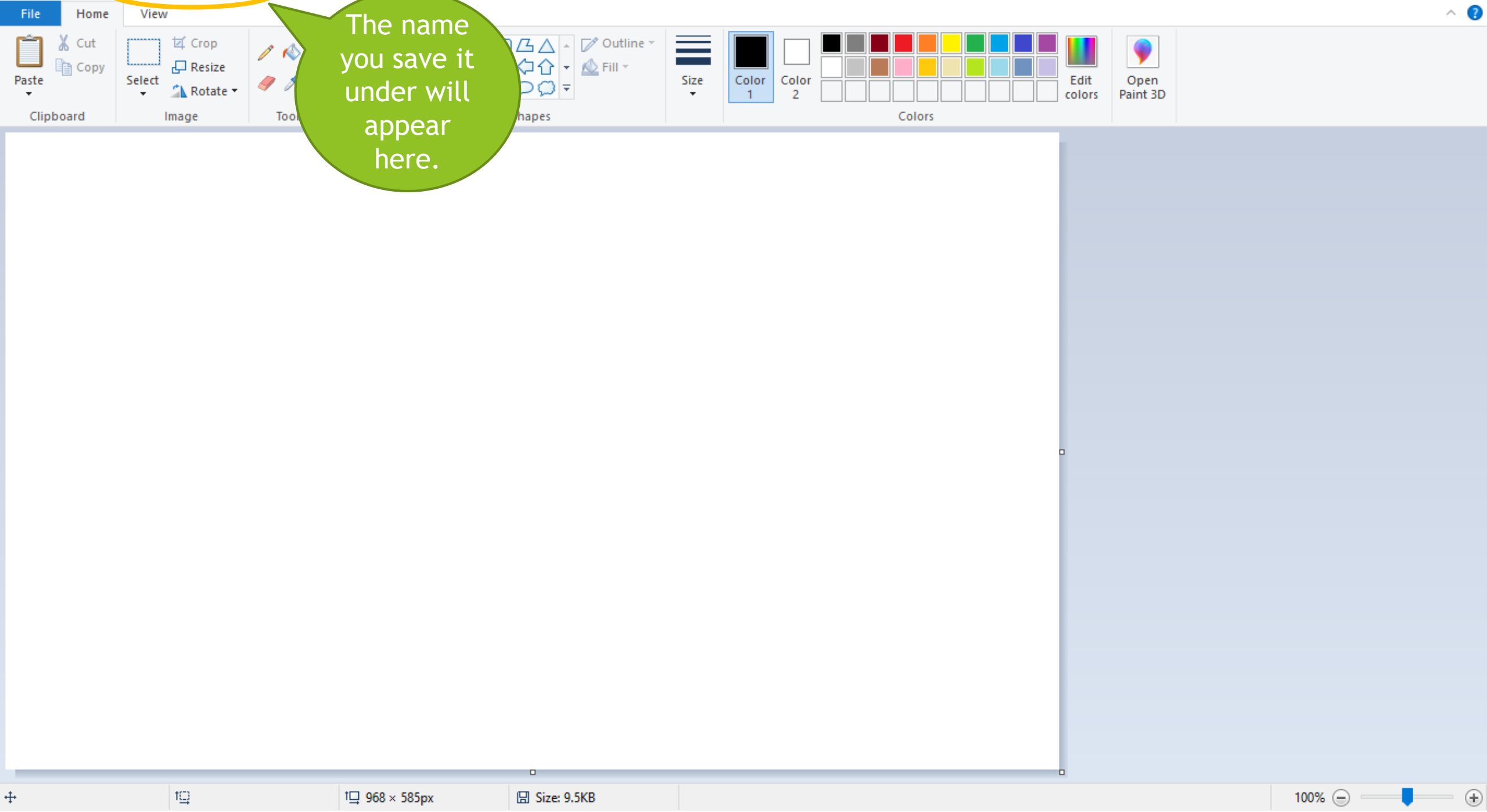
Open Paint 3D

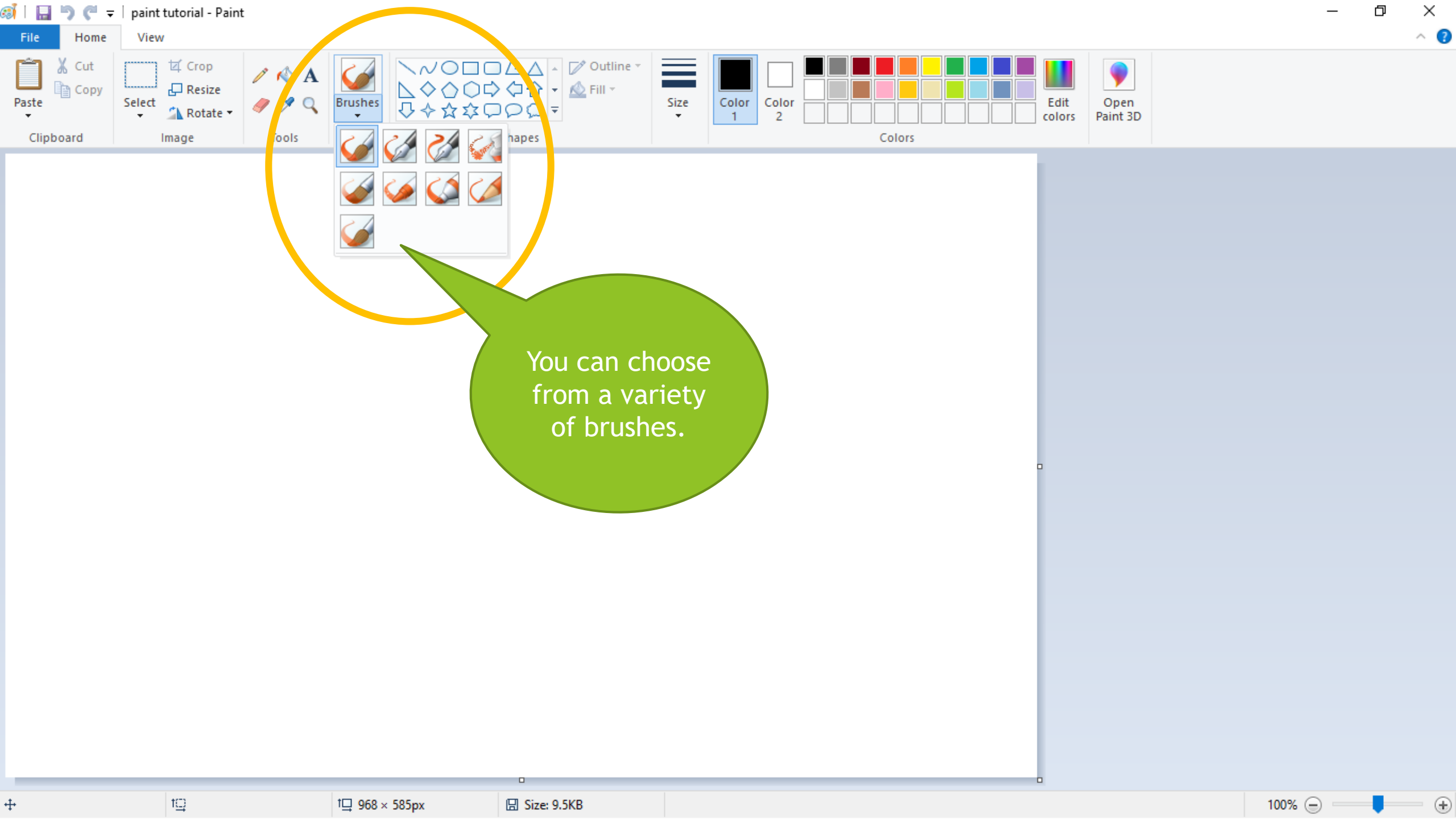


Choose where to save your work.

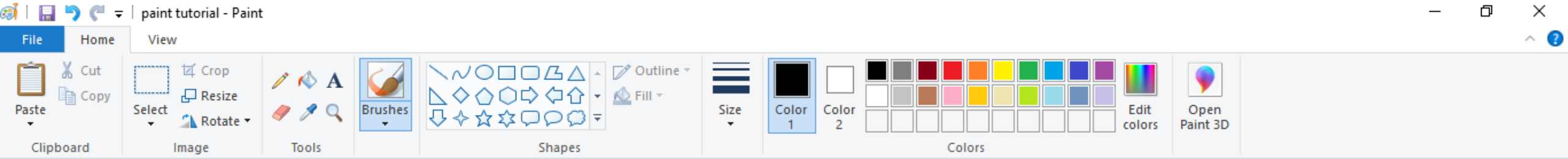


The name you save it under will appear here.

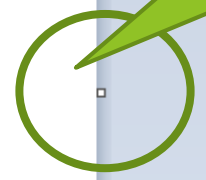




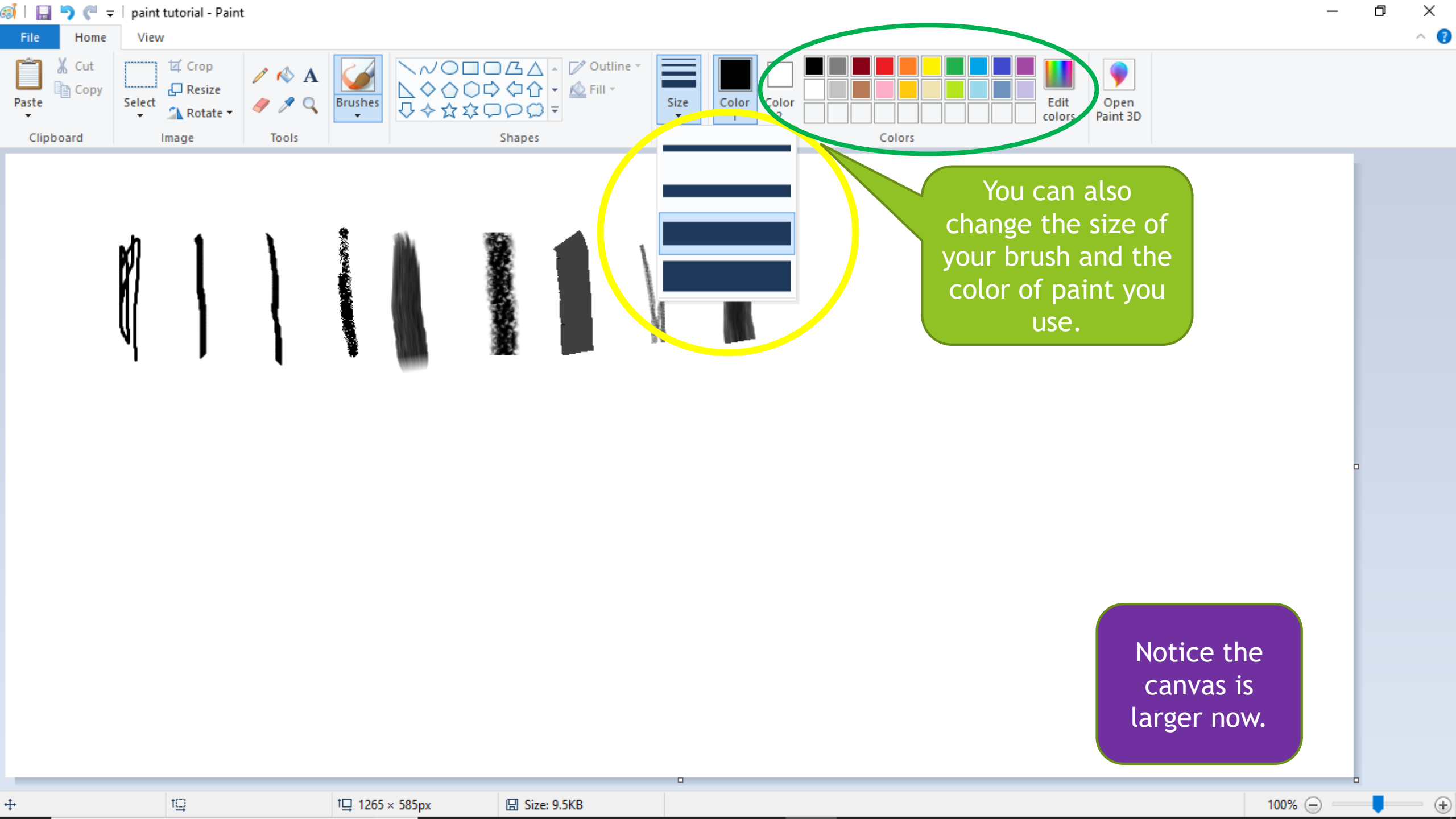
You can choose from a variety of brushes.



These are the marks each brush makes.

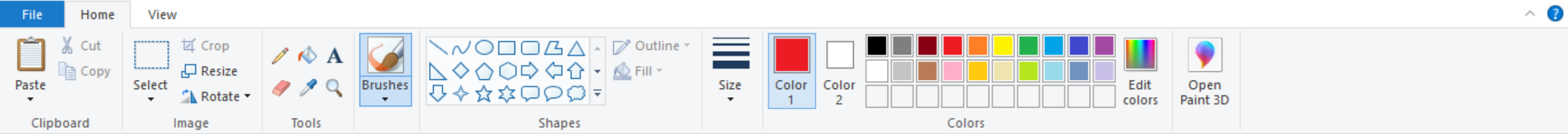


You can make your canvas bigger or smaller by pulling on these squares.

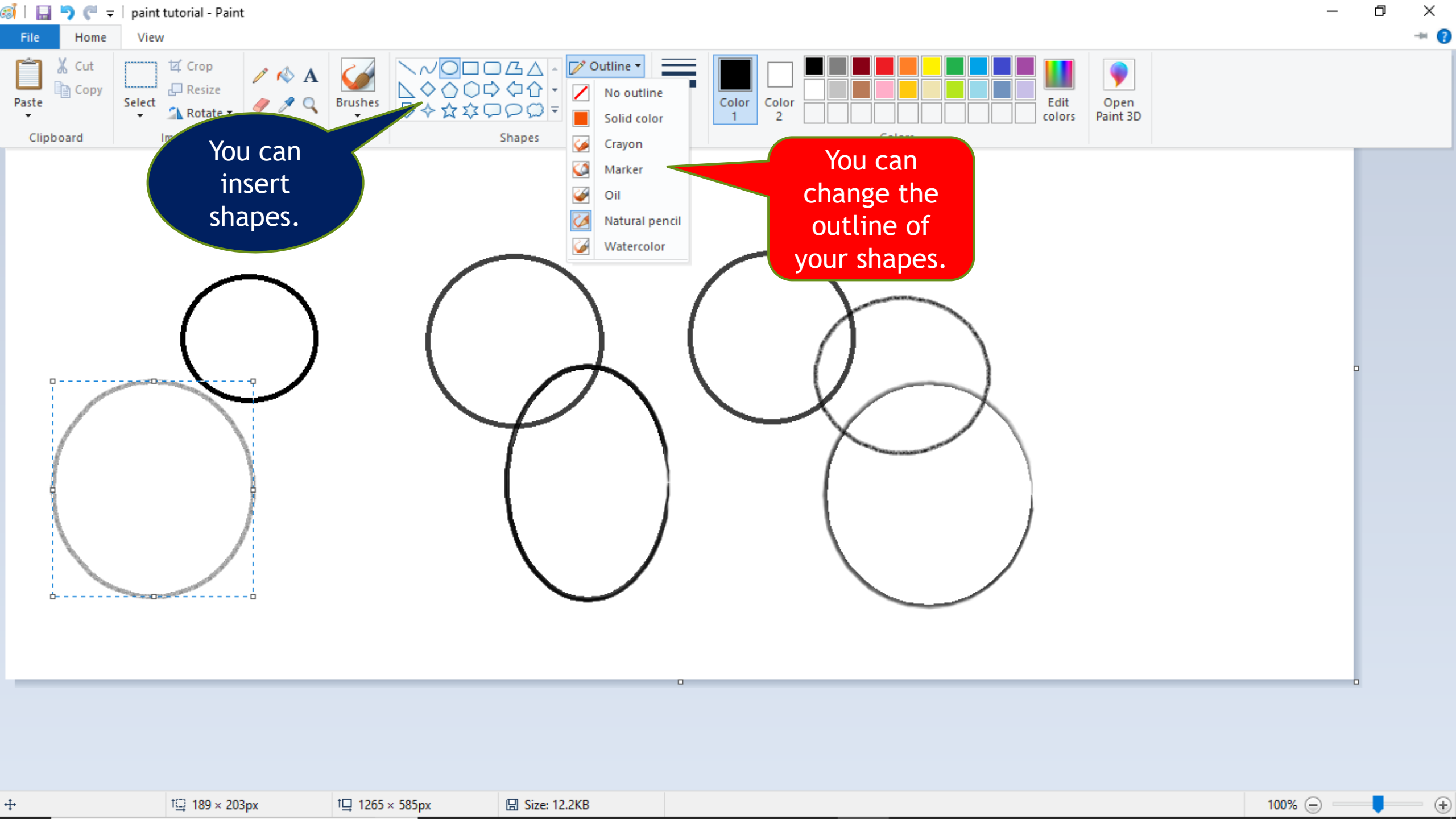


You can also change the size of your brush and the color of paint you use.

Notice the canvas is larger now.

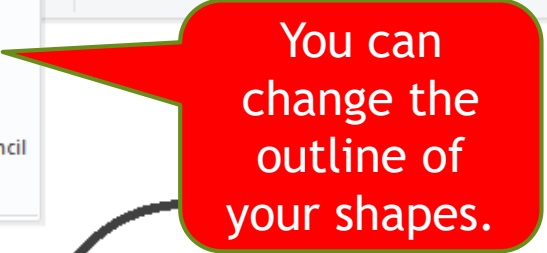
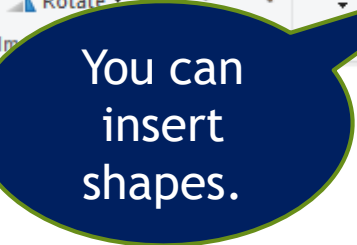


Here you can see that I changed the color and size of the lines for each brush.



You can insert shapes.

You can change the outline of your shapes.



You can make custom colors

Basic colors:

Red	Yellow	Green	Cyan	Blue	Magenta
Orange	Light Green	Teal	Dark Blue	Purple	Pink
Brown	Dark Green	Dark Teal	Dark Blue	Dark Purple	Light Purple
Black	Dark Olive	Dark Grey	Medium Grey	Light Grey	White

Custom colors:

Cyan					

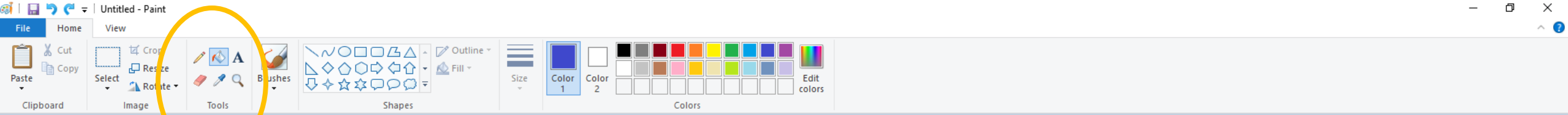
Define Custom Colors >>

Hue: 118 Red: 63
Sat: 203 Green: 239
Lum: 142 Blue: 231

ColorSolid

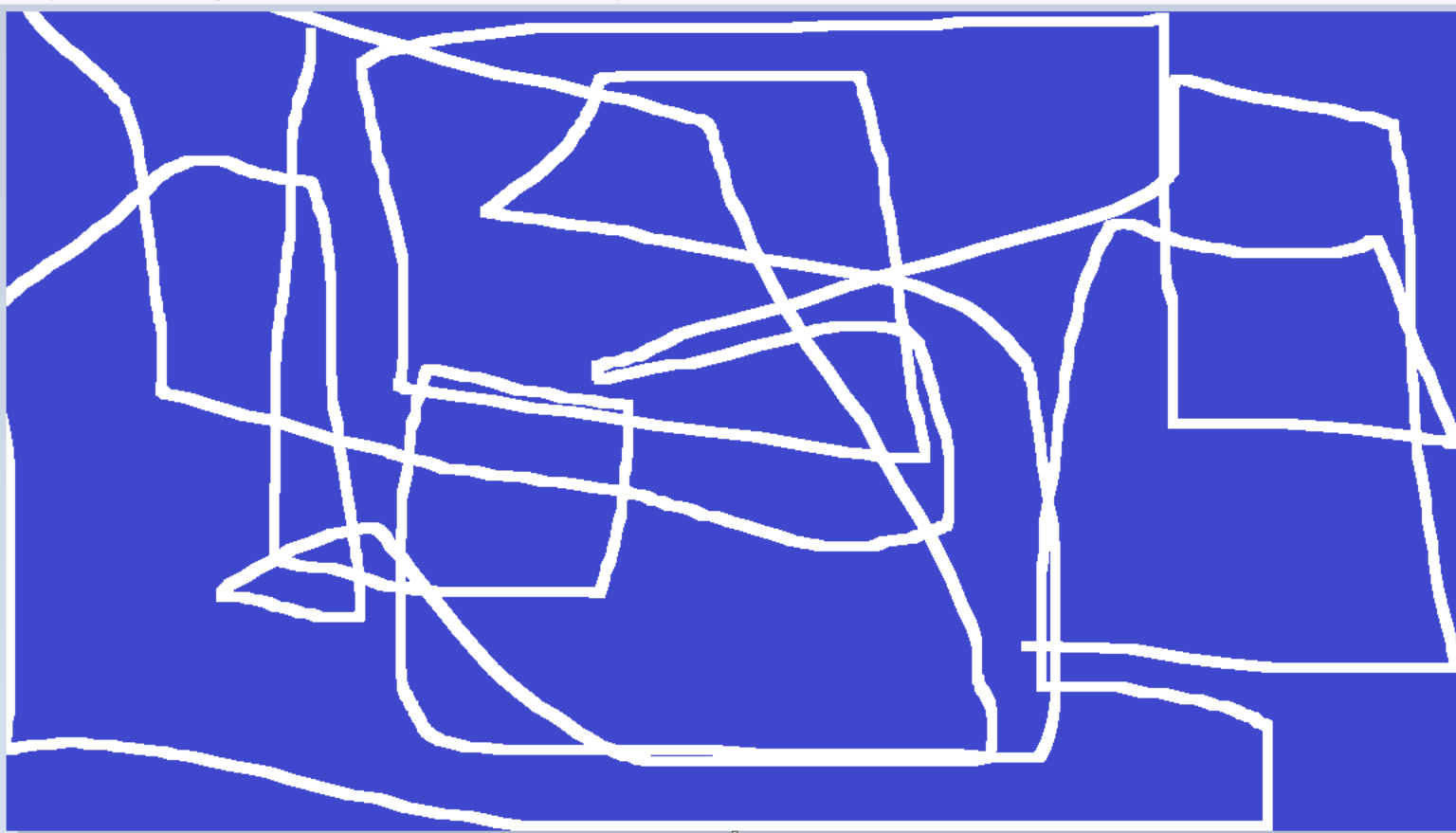
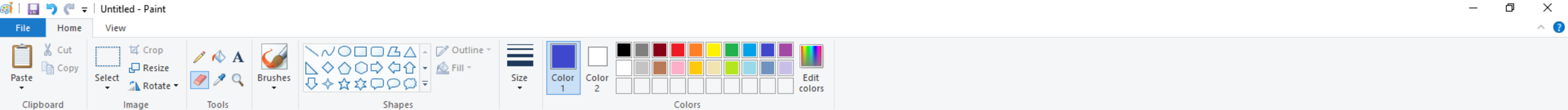
Add to Custom Colors

OK Cancel

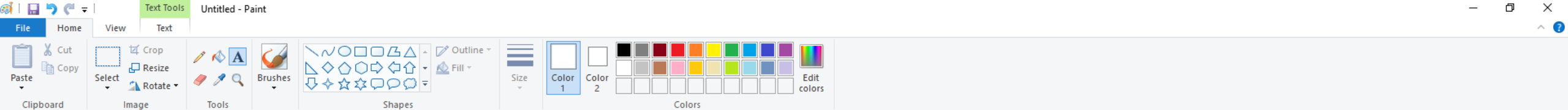


You can use a variety of tools. I chose a color and used the paint bucket to fill the page with a solid color.

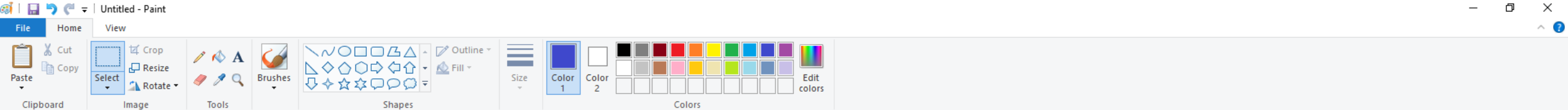




Here I used the eraser to paint with.



By clicking the A
you can insert
text on your
canvas.



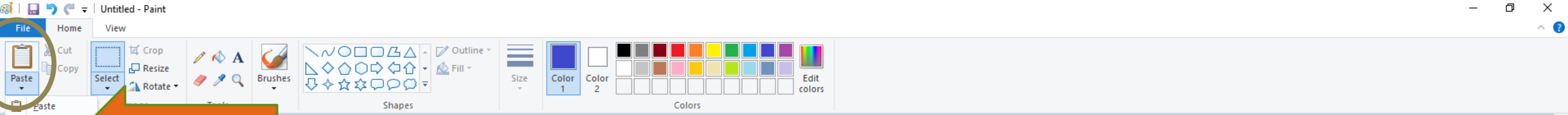
You can use a variety of fonts.

Fonts

Fonts

You can change the color!

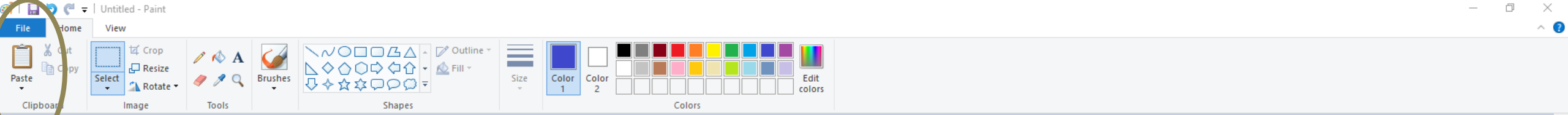
You can make the size **Big**
OR super tiny.



You can insert pictures!

You can change the color!

You can make the size **Big**
OR super tiny.



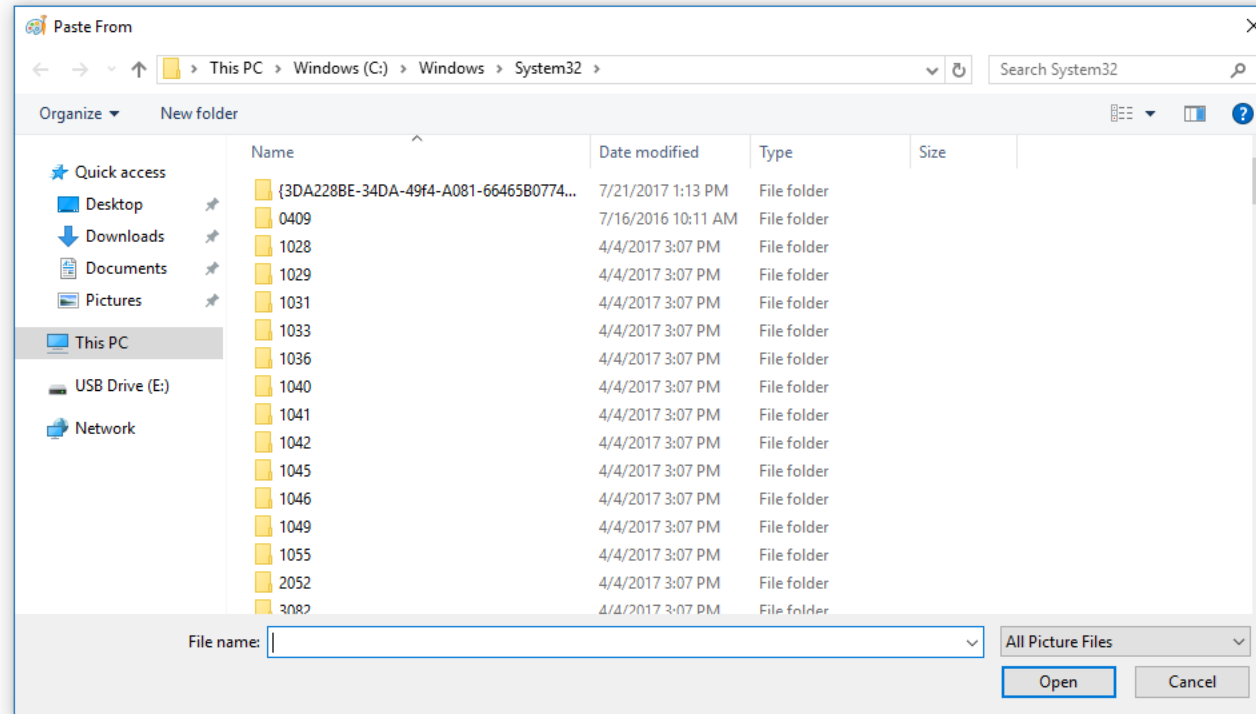
You can use a variety of fonts.

Fonts

Fonts

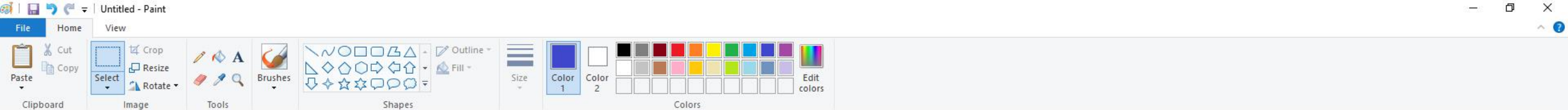
You can color!

You can make the size **Big**
OR super tiny.



Find a picture on your computer.





You can use a variety of fonts.

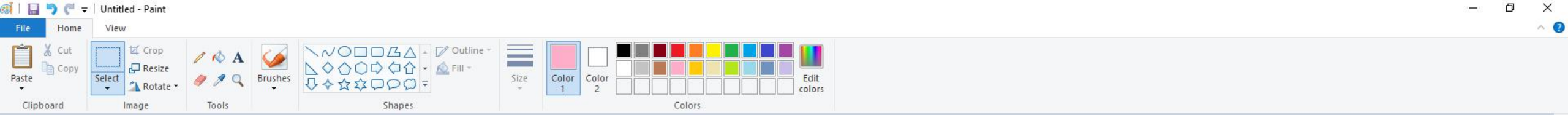
Fonts

Fonts

You can change the color!

You can make the size **Big**
OR super tiny.





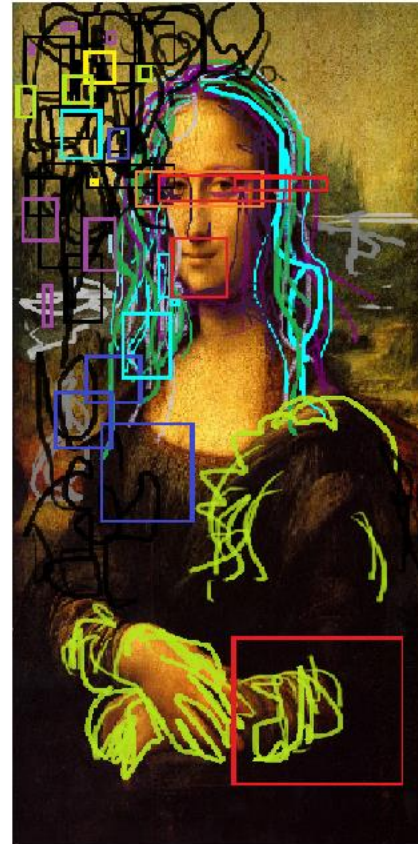
You can use a variety of fonts.

Fonts

Fonts

You can change the color!

You can make the size **Big**
OR super tiny.



You can paint on the pictures you insert!

You can use this to present your work to the class!

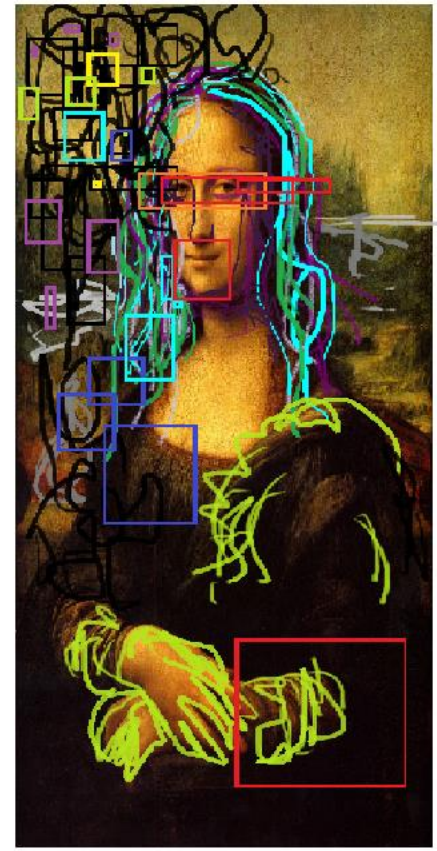
You can use a variety of fonts.

Fonts

Fonts

You can change the color!

You can make the size **Big**
OR super tiny.



You can use a variety of fonts.

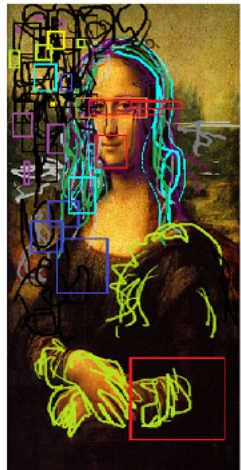
Font

Font

You can change the color!

You can make the size **Big**

or super tiny.





You can change the color!

You can make the size **Big**
or super tiny.



You can use a variety of fonts.

Fonts

Fonts

You can change the color!

You can make the size **Big**

or

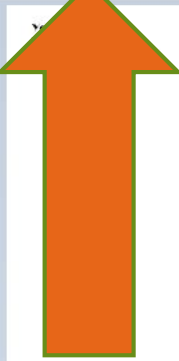
File Home View

Zoom in Zoom out 100 %

Rulers Gridlines Status bar

Full screen Thumbnail

Show or hide Display



Photo

You can change the color!

You can make the size **Big**
or super tiny.

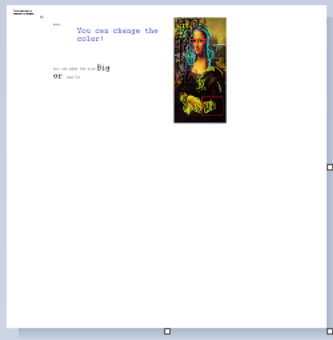


File Home View

Zoom in Zoom out 100% Zoom

Rulers
 Gridlines
 Status bar
Show or hide

Full screen
 Thumbnail
Display



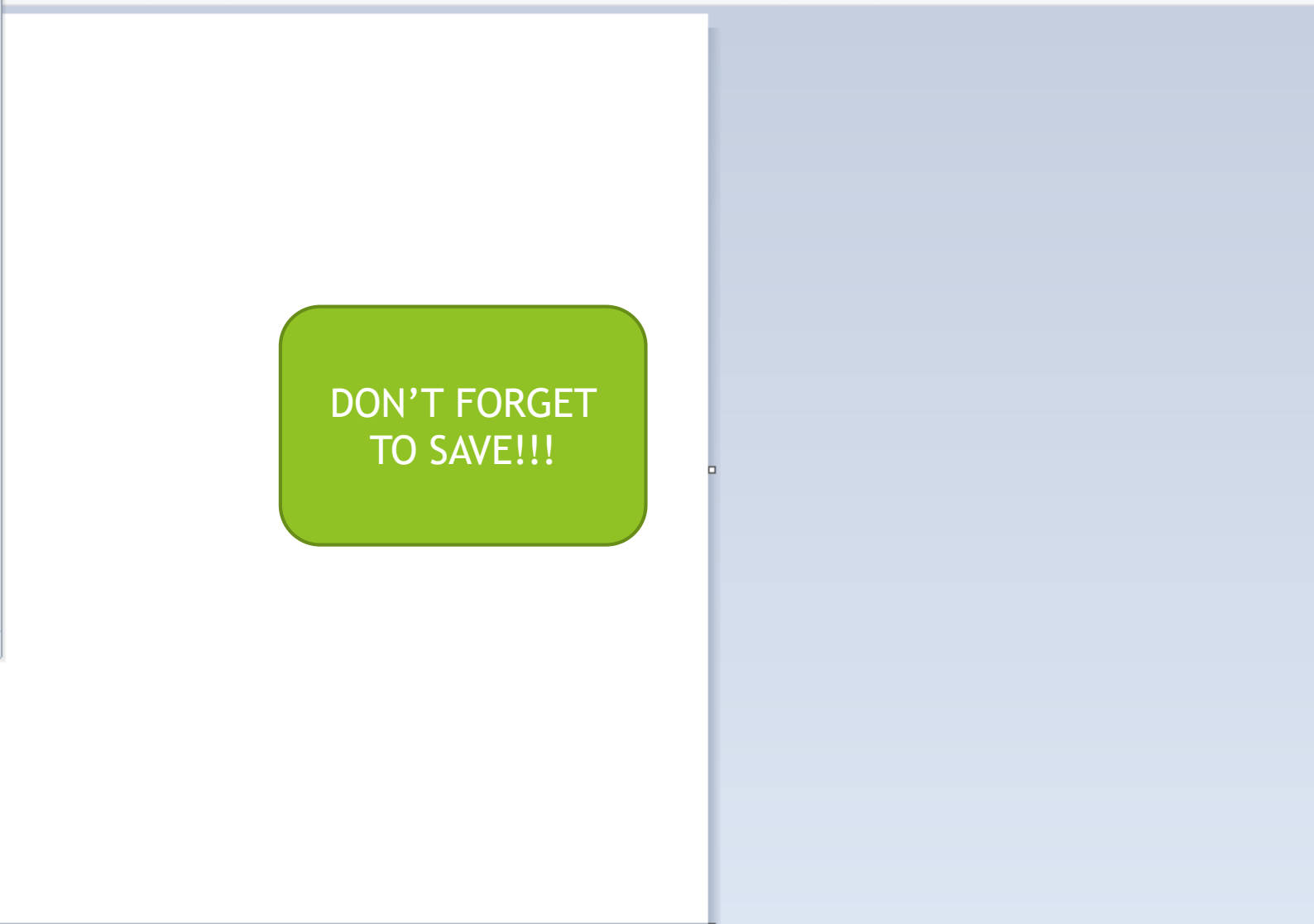
File

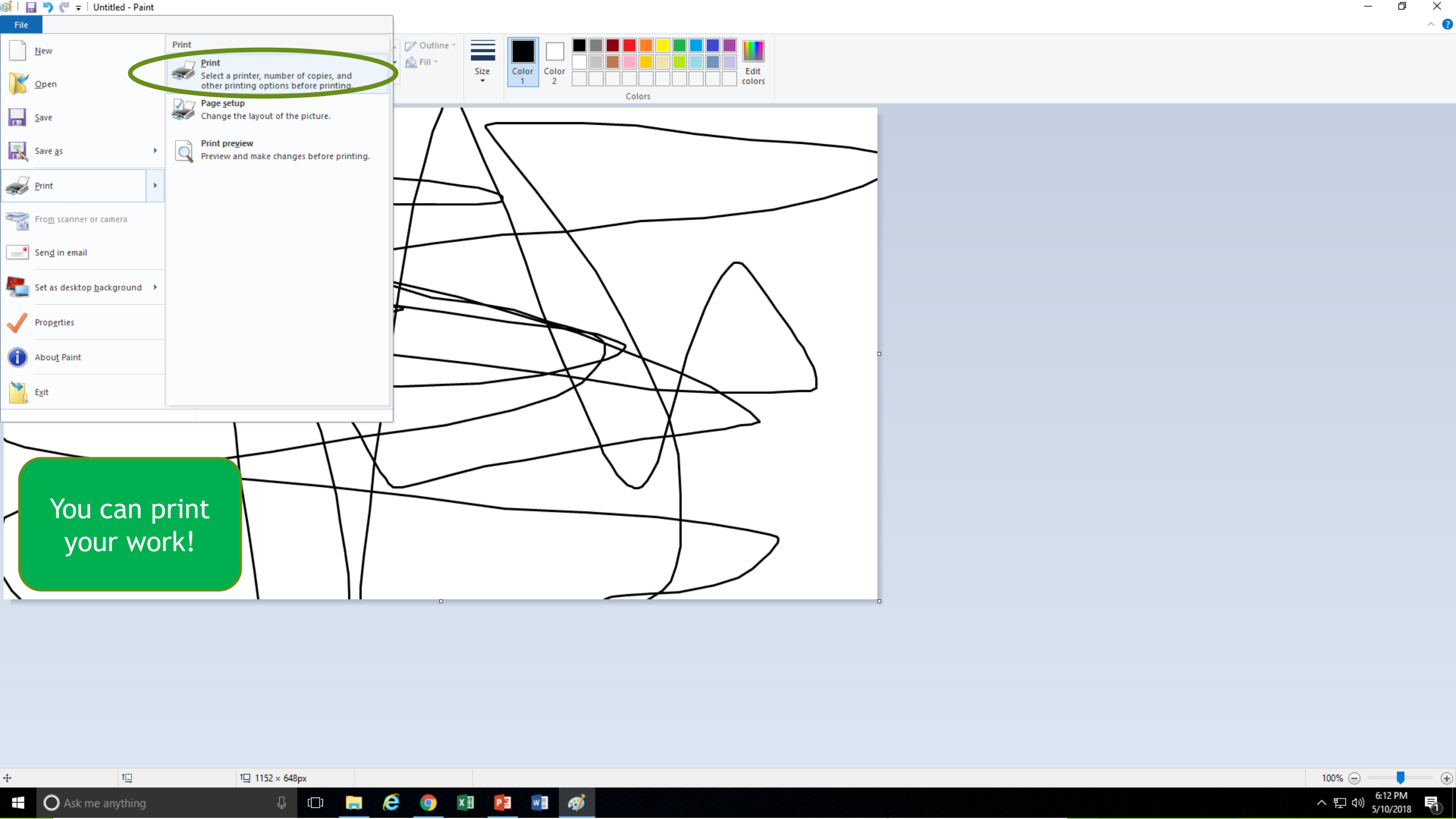
- New
- Open
- Save
- Save as**
- Print
- From scanner or camera
- Send in email
- Set as desktop background
- Properties
- About Paint
- Exit

Save as

- PNG picture**
Save a photo or drawing with high quality and use it on your computer or on the web.
- JPEG picture**
Save a photo with good quality and use it on your computer, in email, or on the web.
- BMP picture**
Save any kind of picture with high quality and use it on your computer.
- GIF picture**
Save a simple drawing with lower quality and use it in email or on the web.
- Other formats**
Open the Save As dialog box to select from all possible file types.

Outline
Fill
Size
Color 1
Color 2
Colors
Edit colors
Open Paint 3D





- Print
Select a printer, number of copies, and other printing options before printing.
- Page setup
Change the layout of the picture.
- Print preview
Preview and make changes before printing.

You can print your work!

Print

General

Select Printer

- Fax
- Fine Arts 030 B&W Printer
- Microsoft Print to PDF
- Microsoft XPS Document Writer
- Send To OneNote

Status: Ready Print to file Preferences

Location: Find Printer...

Comment:

Page Range

All Selection Current Page Pages:

Number of copies: 1

Collate

1 1 2 2 3 3

Print Cancel Apply

Choose your printer.

