

Drums - In drum sheet music the various drum elements are represented by a rounded note. Each note position corresponds to a specific drum set element.



A musical staff with five lines. Six rounded notes are placed on the staff at different horizontal positions. The notes are: a quarter note on the first space (Bass drum), a quarter note on the second space (Snare drum), a quarter note on the second space (Tom 1), a quarter note on the third space (Tom 2), a quarter note on the third space (Tom 3), and a quarter note on the fourth space (Tom 4).

Bass drum Snare drum Tom 1 Tom 2 Tom 3 Tom 4

Cymbals - In drum sheet music cymbals and hi-hat are represented by a x-shaped note. Each note position corresponds to a specific cymbal type.



A musical staff with five lines. Six x-shaped notes are placed on the staff at different horizontal positions. The notes are: an x-shaped note on the first space (Closed Hi-hat), an x-shaped note on the second space (Open Hi-hat), an x-shaped note on the third space (Foot Hi-hat), an x-shaped note on the third space (Ride), an x-shaped note on the fourth space (Ride Bell), and an x-shaped note on the fourth space (Crash).

Closed Hi-hat Open Hi-hat Foot Hi-hat Ride Ride Bell Crash

Rock

POP ROCK

Musical notation for Pop Rock in 4/4 time. The top staff shows a drum pattern with four eighth notes on the snare, each marked with an 'x'. The bottom staff shows a bass line with a quarter note on the first beat, a half note on the second, and quarter notes on the third and fourth.

BLUES ROCK

Musical notation for Blues Rock in 4/4 time. The top staff shows a drum pattern with four eighth notes on the snare, each marked with an 'x'. The bottom staff shows a bass line with a quarter note on the first beat, a half note on the second, a quarter note with a slash on the third, and a quarter note on the fourth.

ROCK'N ROLL

Musical notation for Rock'n Roll in 4/4 time. The top staff shows a drum pattern with eighth notes on the snare, including triplets on the second and fourth beats, each marked with an 'x'. The bottom staff shows a bass line with a quarter note on the first beat, a half note on the second, and quarter notes on the third and fourth.

TWIST

Musical notation for Twist in 4/4 time. The top staff shows a drum pattern with four eighth notes on the snare, each marked with an 'x'. The bottom staff shows a bass line with a quarter note on the first beat, a half note on the second, and quarter notes on the third and fourth.

FOLK ROCK

Musical notation for Folk Rock in 4/4 time. The top staff shows a drum pattern with four eighth notes on the snare, each marked with an 'x'. The bottom staff shows a bass line with a quarter note on the first beat, a half note on the second, and quarter notes on the third and fourth.

COUNTRY ROCK

Musical notation for Country Rock in 4/4 time. The top staff shows a drum pattern with four eighth notes on the snare, each marked with an 'x'. The bottom staff shows a bass line with a quarter note on the first beat, a half note on the second, and quarter notes on the third and fourth.

HARD ROCK

Musical notation for Hard Rock in 4/4 time. The top staff shows a drum pattern with eighth notes on the snare, each marked with an 'x' and a circled 'x'. The bottom staff shows a bass line with a quarter note on the first beat, a half note on the second, and quarter notes on the third and fourth.

HEAVY METAL

Musical notation for Heavy Metal in 4/4 time. The top staff shows a drum pattern with eighth notes on the snare, each marked with an 'x' and a circled 'x'. The bottom staff shows a bass line with a quarter note on the first beat, a half note on the second, and quarter notes on the third and fourth.

MOTOWN ROCK

Musical notation for Motown Rock in 4/4 time. The top staff shows a drum pattern with eighth notes on the snare, each marked with an 'x'. The bottom staff shows a bass line with a quarter note on the first beat, a half note on the second, and quarter notes on the third and fourth.

Shuffle

OLD SHUFFLE

Musical notation for Old Shuffle in 4/4 time. The top staff shows a drum pattern with four groups of eighth notes, each marked with a '3' and a bracket, indicating a triplet. The bottom staff shows a bass line with four groups of eighth notes, each marked with a '3' and a bracket, indicating a triplet.

BLUES SHUFFLE 1

Musical notation for Blues Shuffle 1 in 4/4 time. The top staff shows a drum pattern with four groups of eighth notes, each marked with a '3' and a bracket, indicating a triplet. The bottom staff shows a bass line with four groups of eighth notes, each marked with a '3' and a bracket, indicating a triplet.

BLUES SHUFFLE 2

Musical notation for Blues Shuffle 2 in 4/4 time. The top staff shows a drum pattern with four groups of eighth notes, each marked with a '3' and a bracket, indicating a triplet. The bottom staff shows a bass line with four groups of eighth notes, each marked with a '3' and a bracket, indicating a triplet.

R & B SHUFFLE 1

Musical notation for R & B Shuffle 1 in 4/4 time. The top staff shows a drum pattern with four groups of eighth notes, each marked with a '3' and a bracket, indicating a triplet. The bottom staff shows a bass line with four groups of eighth notes, each marked with a '3' and a bracket, indicating a triplet.

R & B SHUFFLE 2

Musical notation for R & B Shuffle 2 in 4/4 time. The top staff shows a drum pattern with four groups of eighth notes, each marked with a '3' and a bracket, indicating a triplet. The bottom staff shows a bass line with four groups of eighth notes, each marked with a '3' and a bracket, indicating a triplet.

ROCK SHUFFLE 1

Musical notation for Rock Shuffle 1 in 4/4 time. The top staff shows a drum pattern with four groups of eighth notes, each marked with a '3' and a bracket, indicating a triplet. The bottom staff shows a bass line with four groups of eighth notes, each marked with a '3' and a bracket, indicating a triplet.

ROCK SHUFFLE 2

Musical notation for Rock Shuffle 2 in 4/4 time. The top staff shows a drum pattern with four groups of eighth notes, each marked with a '3' and a bracket, indicating a triplet. The bottom staff shows a bass line with four groups of eighth notes, each marked with a '3' and a bracket, indicating a triplet.

FUNK SHUFFLE 1

Musical notation for Funk Shuffle 1 in 4/4 time. The top staff shows a drum pattern with four groups of eighth notes, each marked with a '3' and a bracket, indicating a triplet. The bottom staff shows a bass line with four groups of eighth notes, each marked with a '3' and a bracket, indicating a triplet.

FUNK SHUFFLE 2

Musical notation for Funk Shuffle 2 in 4/4 time. The top staff shows a drum pattern with four groups of eighth notes, each marked with a '3' and a bracket, indicating a triplet. The bottom staff shows a bass line with four groups of eighth notes, each marked with a '3' and a bracket, indicating a triplet.

Funk

FUNK '70 1

Musical notation for Funk '70 1, featuring a 4/4 time signature and a bass line with eighth notes and a drum line with eighth notes and rests.

FUNK '70 2

Musical notation for Funk '70 2, featuring a 4/4 time signature and a bass line with eighth notes and a drum line with eighth notes and rests.

FUNK '70 3

Musical notation for Funk '70 3, featuring a 4/4 time signature and a bass line with eighth notes and a drum line with eighth notes and rests.

FUNK BLUES 1

Musical notation for Funk Blues 1, featuring a 4/4 time signature and a bass line with eighth notes and a drum line with eighth notes and rests.

FUNK BLUES 2

Musical notation for Funk Blues 2, featuring a 4/4 time signature and a bass line with eighth notes and a drum line with eighth notes and rests.

FUNK ROCK 1

Musical notation for Funk Rock 1, featuring a 4/4 time signature and a bass line with eighth notes and a drum line with eighth notes and rests.

FUNK ROCK 2

Musical notation for Funk Rock 2, featuring a 4/4 time signature and a bass line with eighth notes and a drum line with eighth notes and rests.

FUNK JAZZ 1

Musical notation for Funk Jazz 1, featuring a 4/4 time signature and a bass line with eighth notes and a drum line with eighth notes and rests.

FUNK JAZZ 2

Musical notation for Funk Jazz 2, featuring a 4/4 time signature and a bass line with eighth notes and a drum line with eighth notes and rests.

Latin

RHUMBA

Musical notation for Rumba in 4/4 time. The notation consists of two staves. The top staff shows a series of eighth notes with 'x' marks above them, indicating a specific drum pattern. The bottom staff shows a bass line with quarter notes and eighth notes.

SAMBA

Musical notation for Samba in 4/4 time. The notation consists of two staves. The top staff shows eighth notes with 'R' and 'L' above them, indicating right and left hand patterns. The bottom staff shows a bass line with quarter notes and eighth notes.

TANGO

Musical notation for Tango in 4/4 time. The notation consists of two staves. The top staff shows eighth notes with 'R' and 'L' above them, indicating right and left hand patterns. The bottom staff shows a bass line with quarter notes and eighth notes.

BEGUINE

Musical notation for Beguine in 4/4 time. The notation consists of two staves. The top staff shows eighth notes with 'R' and 'L' above them, indicating right and left hand patterns. The bottom staff shows a bass line with quarter notes and eighth notes.

CALYPSO

Musical notation for Calypso in 4/4 time. The notation consists of two staves. The top staff shows eighth notes with 'x' marks above them, indicating a specific drum pattern. The bottom staff shows a bass line with quarter notes and eighth notes.

MAMBO

Musical notation for Mambo in 4/4 time. The notation consists of two staves. The top staff shows eighth notes with 'x' marks above them, indicating a specific drum pattern. The bottom staff shows a bass line with quarter notes and eighth notes.

CHA CHA CHA

Musical notation for Cha Cha Cha in 4/4 time. The notation consists of two staves. The top staff shows eighth notes with 'x' marks above them, indicating a specific drum pattern. The bottom staff shows a bass line with quarter notes and eighth notes.

MERENGUE

Musical notation for Merengue in 4/4 time. The notation consists of two staves. The top staff shows eighth notes with 'x' marks above them, indicating a specific drum pattern. The bottom staff shows a bass line with quarter notes and eighth notes.

BOSSANOVA

Musical notation for Bossanova in 4/4 time. The notation consists of two staves. The top staff shows eighth notes with 'x' marks above them, indicating a specific drum pattern. The bottom staff shows a bass line with quarter notes and eighth notes.

Afro reggae

AFROCUBAN

Musical notation for AFROCUBAN style, featuring a 4/4 time signature and a mix of eighth and quarter notes with various articulations.

NANIGO

Musical notation for NANIGO style, featuring a 4/4 time signature and a mix of eighth and quarter notes with various articulations.

AFRO ROCK

Musical notation for AFRO ROCK style, featuring a 4/4 time signature and a mix of eighth and quarter notes with various articulations.

FAST REGGAE

Musical notation for FAST REGGAE style, featuring a 4/4 time signature and a mix of eighth and quarter notes with various articulations.

SLOW REGGAE 1

Musical notation for SLOW REGGAE 1 style, featuring a 4/4 time signature and a mix of eighth and quarter notes with various articulations.

SLOW REGGAE 2

Musical notation for SLOW REGGAE 2 style, featuring a 4/4 time signature and a mix of eighth and quarter notes with various articulations, including triplets.

SKA

Musical notation for SKA style, featuring a 4/4 time signature and a mix of eighth and quarter notes with various articulations.

SAMBA REGGAE

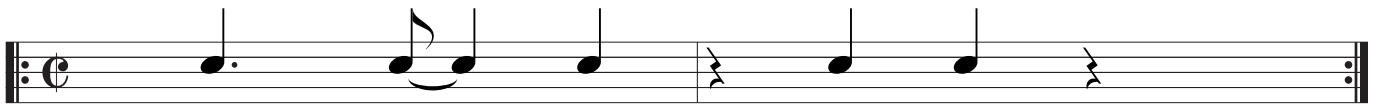
Musical notation for SAMBA REGGAE style, featuring a 4/4 time signature and a mix of eighth and quarter notes with various articulations.

FUNKY REGGAE

Musical notation for FUNKY REGGAE style, featuring a 4/4 time signature and a mix of eighth and quarter notes with various articulations.

Afro-Cuban

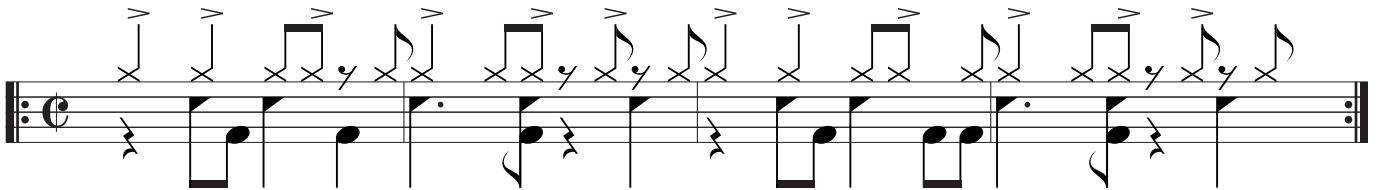
SON CLAVE



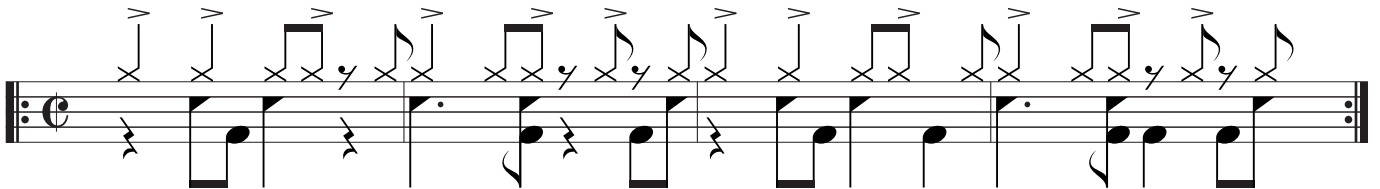
RUMBA CLAVE



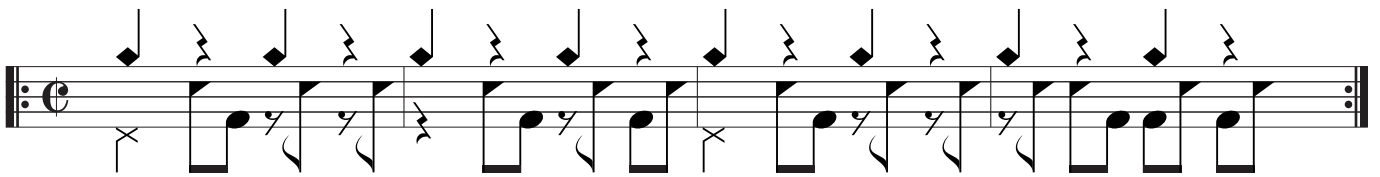
CASCARA SON



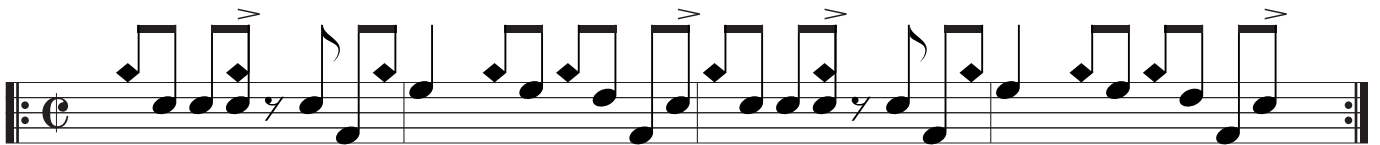
CASCARA RUMBA



SONGO



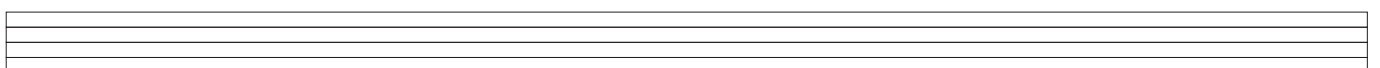
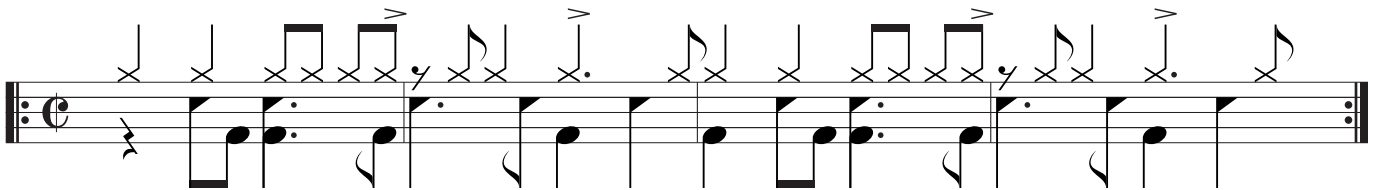
GUAGUANCO



MOZAMBIQUE



CHA CHA



Waltz

VIENNESE WALTZ

Musical notation for Viennese Waltz in 3/4 time. The staff shows a sequence of six eighth notes: quarter, quarter, quarter, quarter, quarter, quarter. Above the staff are six vertical tick marks, each aligned with a note.

MUSETTE WALTZ

Musical notation for Musette Waltz in 3/4 time. The staff shows a sequence of six eighth notes: quarter, quarter, quarter, quarter, quarter, quarter. Above the staff are six vertical tick marks, with lightning bolt symbols between the second and third, and fifth and sixth notes.

SLOW WALTZ 1

Musical notation for Slow Waltz 1 in 3/4 time. The staff shows a sequence of six eighth notes: quarter, quarter, quarter, quarter, quarter, quarter. Above the staff are six vertical tick marks, each aligned with a note.

SLOW WALTZ 2

Musical notation for Slow Waltz 2 in 3/4 time. The staff shows a sequence of six eighth notes: quarter, quarter, quarter, quarter, quarter, quarter. Above the staff are six vertical tick marks, each aligned with a note. Brackets labeled '3' are placed above the first three and last three notes.

FRENCH BOLERO

Musical notation for French Bolero in 3/4 time. The staff shows a sequence of six eighth notes: quarter, quarter, quarter, quarter, quarter, quarter. Above the staff are six vertical tick marks, each aligned with a note. Brackets labeled '3' are placed above the first three and last three notes. Above the first three notes are the letters 'R', 'L', 'R', 'L', 'R', 'L' with arrows pointing to the notes.

AMERICAN PASO DOBLE

Musical notation for American Paso Doble in 3/4 time. The staff shows a sequence of six eighth notes: quarter, quarter, quarter, quarter, quarter, quarter. Above the staff are six vertical tick marks, each aligned with a note.

MAZURKA

Musical notation for Mazurka in 3/4 time. The staff shows a sequence of six eighth notes: quarter, quarter, quarter, quarter, quarter, quarter. Above the staff are six vertical tick marks, each aligned with a note. Lightning bolt symbols are placed between the second and third, and fifth and sixth notes.

JAZZ WALTZ

Musical notation for Jazz Waltz in 3/4 time. The staff shows a sequence of six eighth notes: quarter, quarter, quarter, quarter, quarter, quarter. Above the staff are six vertical tick marks, each aligned with a note. Brackets labeled '3' are placed above the first three and last three notes. Lightning bolt symbols are placed between the second and third, and fifth and sixth notes.

LATIN WALTZ

Musical notation for Latin Waltz in 3/4 time. The staff shows a sequence of six eighth notes: quarter, quarter, quarter, quarter, quarter, quarter. Above the staff are six vertical tick marks, each aligned with a note.

Jeff Porcaro grooves

CHILD' ANTHEM

Musical notation for 'CHILD' ANTHEM' in 4/4 time. The top staff shows a drum pattern with triplets of eighth notes. The bottom staff shows a bass line with eighth notes.

GIRL GOODBYE

Musical notation for 'GIRL GOODBYE' in 4/4 time. The top staff shows a drum pattern with eighth notes and rests. The bottom staff shows a bass line with eighth notes.

HOLD THE LINE

Musical notation for 'HOLD THE LINE' in 4/4 time. The top staff shows a drum pattern with triplets of eighth notes. The bottom staff shows a bass line with eighth notes.

ROSANNA

Musical notation for 'ROSANNA' in 4/4 time. The top staff shows a drum pattern with sixteenth notes and accents. The bottom staff shows a bass line with eighth notes.

AFRICA

Musical notation for 'AFRICA' in 4/4 time. The top staff shows a drum pattern with eighth notes and accents. The bottom staff shows a bass line with eighth notes.

TILL THE END

Musical notation for 'TILL THE END' in 4/4 time. The top staff shows a drum pattern with eighth notes and rests. The bottom staff shows a bass line with eighth notes.

I'LL BE OVER YOU

Musical notation for 'I'LL BE OVER YOU' in 4/4 time. The top staff shows a drum pattern with eighth notes and accents. The bottom staff shows a bass line with eighth notes.

COULD THIS BE LOVE

Musical notation for 'COULD THIS BE LOVE' in 4/4 time. The top staff shows a drum pattern with eighth notes and rests. The bottom staff shows a bass line with eighth notes.

John Bonham grooves

GOOD TIMES BAD TIMES

Musical notation for 'Good Times Bad Times' in 4/4 time. The notation consists of two staves. The top staff shows a drum pattern with 'x' marks for cymbals and vertical lines for snare and tom-tom hits. The bottom staff shows the bass line with eighth and sixteenth notes.

I CAN'T QUIT YOU BABY

Musical notation for 'I Can't Quit You Baby' in 12/8 time. The notation consists of two staves. The top staff shows a drum pattern with 'x' marks for cymbals and vertical lines for snare and tom-tom hits, including triplet markings. The bottom staff shows the bass line with eighth notes and triplet markings.

HOW MANY MORE TIMES

Musical notation for 'How Many More Times' in 4/4 time. The notation consists of two staves. The top staff shows a drum pattern with 'x' marks for cymbals and vertical lines for snare and tom-tom hits. The bottom staff shows the bass line with eighth notes and triplet markings.

SINCE I'VE BEEN LOVING YOU

Musical notation for 'Since I've Been Loving You' in 12/8 time. The notation consists of two staves. The top staff shows a drum pattern with 'x' marks for cymbals and vertical lines for snare and tom-tom hits. The bottom staff shows the bass line with eighth notes and triplet markings.

BLACK DOG

Musical notation for 'Black Dog' in 4/4 time. The notation consists of two staves. The top staff shows a drum pattern with 'x' marks for cymbals and vertical lines for snare and tom-tom hits. The bottom staff shows the bass line with eighth notes and triplet markings.

STAIRWAY TO HEAVEN

Musical notation for 'Stairway to Heaven' in 4/4 time. The notation consists of two staves. The top staff shows a drum pattern with 'x' marks for cymbals and vertical lines for snare and tom-tom hits. The bottom staff shows the bass line with eighth notes and triplet markings.

WHEN THE LEVEE BREAKS

Musical notation for 'When the Levee Breaks' in 4/4 time. The notation consists of two staves. The top staff shows a drum pattern with 'x' marks for cymbals and vertical lines for snare and tom-tom hits. The bottom staff shows the bass line with eighth notes and triplet markings.

SOUTH BOUND SAUREZ

Musical notation for 'South Bound Saurez' in 4/4 time. The notation consists of two staves. The top staff shows a drum pattern with 'x' marks for cymbals and vertical lines for snare and tom-tom hits. The bottom staff shows the bass line with eighth notes and triplet markings.

Phil Collins grooves

THE LAMB LIES DOWN ON BROADWAY

Musical notation for 'The Lamb Lies Down on Broadway' in 4/4 time. The top staff shows a drum pattern with accents (>) and crosses (x) on the snare and tom-toms. The bottom staff shows the bass line with notes and rests.

FOLLOW YOU, FOLLOW ME

Musical notation for 'Follow You, Follow Me' in 4/4 time. The top staff shows a drum pattern with accents (>) and crosses (x). The bottom staff shows the bass line with notes and rests.

DOWN AND OUT

Musical notation for 'Down and Out' in 5/4 time. The top staff shows a drum pattern with accents (>) and crosses (x). The bottom staff shows the bass line with notes and rests.

INVISIBLE TOUCH

Musical notation for 'Invisible Touch' in 4/4 time. The top staff shows a drum pattern with accents (>) and crosses (x). The bottom staff shows the bass line with notes and rests.

JESUS HE KNOWS ME

Musical notation for 'Jesus He Knows Me' in 4/4 time. The top staff shows a drum pattern with accents (>) and crosses (x). The bottom staff shows the bass line with notes and rests.

IT DON'T MATTER TO ME

Musical notation for 'It Don't Matter to Me' in 4/4 time. The top staff shows a drum pattern with accents (>) and crosses (x). The bottom staff shows the bass line with notes and rests.

SUSSUDIO

Musical notation for 'Susudio' in 4/4 time. The top staff shows a drum pattern with accents (>) and crosses (x). The bottom staff shows the bass line with notes and rests.

EASY LOVER

Musical notation for 'Easy Lover' in 4/4 time. The top staff shows a drum pattern with accents (>) and crosses (x). The bottom staff shows the bass line with notes and rests.

Steve Gadd grooves

50 WAYS TO LEAVE YOUR LOVER

Musical notation for '50 WAYS TO LEAVE YOUR LOVER' in 4/4 time. The notation features a series of eighth notes with accents and 'x' marks, and a final measure with a circled 'x'.

LATE IN THE EVENING

Musical notation for 'LATE IN THE EVENING' in 4/4 time. The notation features a series of eighth notes with accents and 'x' marks.

LENORE

Musical notation for 'LENORE' in 4/4 time. The notation features a series of eighth notes with accents and 'x' marks.

SICILY

Musical notation for 'SICILY' in 4/4 time. The notation features a series of eighth notes with accents and 'x' marks, and a final measure with a circled 'x'.

I LOVE WASTIN' TIME WITH YOU

Musical notation for 'I LOVE WASTIN' TIME WITH YOU' in 4/4 time. The notation features a series of eighth notes with accents and 'x' marks, and a final measure with a circled 'x'.

I'VE GOT THE MELODY

Musical notation for 'I'VE GOT THE MELODY' in 4/4 time. The notation features a series of eighth notes with accents and 'x' marks, and a final measure with a circled 'x'.

DIRTY OLD MAN

Musical notation for 'DIRTY OLD MAN' in 4/4 time. The notation features a series of eighth notes with accents and 'x' marks, and a final measure with a circled 'x'.

HOP SCOTCH

Musical notation for 'HOP SCOTCH' in 4/4 time. The notation features a series of eighth notes with accents and 'x' marks, and a final measure with a circled 'x'.